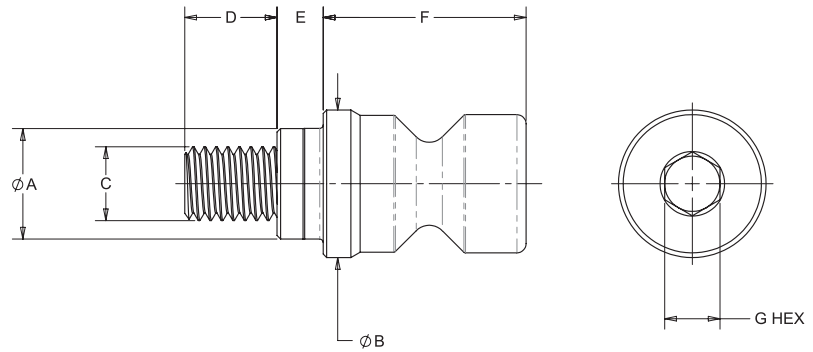




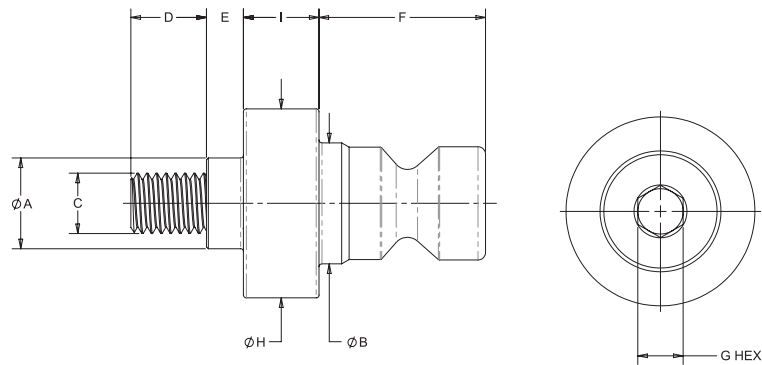
Pull Studs

- Material: A2 Tool Steel
- Heat Treat: Thru Hardened, Rc 50-54
- Finish: Black Oxide



Part Number	A (mm)	B (mm)	C	D (mm)	E (mm)	F (mm)	G (mm)	Weight lbs (kg)
QL-200800	12	16	M8 x 1.25	10	5	22	6	.06 (.03)
QL-200805	16	20	M10 x 1.5	14	5	22	8	.10 (.05)

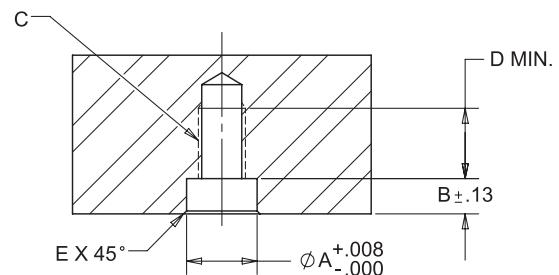
Spacer Studs



Part Number	A (mm)	B (mm)	C	D (mm)	E (mm)	F (mm)	G (mm)	H (mm)	I (mm)	Weight lbs (kg)
QL-200810	12	16	M8 x 1.25	10	5	22	6	25	10	.14 (.06)
QL-200815	16	20	M10 x 1.5	14	5	22	8	29	10	.21 (.10)

Pull Stud Installation Dimensions

Part Number	A (mm)	B (mm)	C	D (mm)	E (mm)
QL-200800 / QL-200810	12	6	M8 x 1.25	12	0.8
QL-200805 / QL-200815	16	6	M10 x 1.5	16	0.8



*tolerances in millimeters

QUICK CHANGE FIXTURING » FIXTURE PRO® MULTI-AXIS QUICK CHANGE FIXTURING